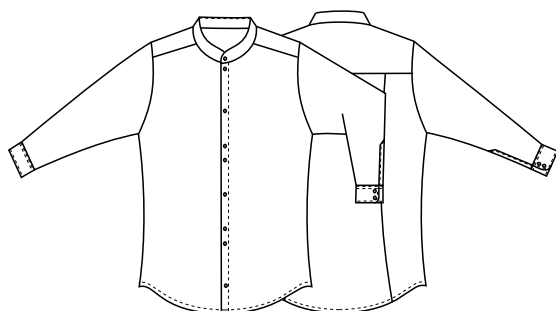


79,5 cm



DETTAGLI

- Collo coreano
- Polso regolabile
- Unisex

TAGLIE

XS ÷ XXXL
Slim Fit

COLORE

000 Nero

TESSUTO

100% poliestere
90 g / m²



Le misure indicate si riferiscono alle taglie **S** per i capi femminili, **L** per i capi maschili. Per i capi a taglia unica le misure indicate sono effettive.

COLORI DISPONIBILI



000 Nero

TABELLE TAGLIE
E CORRISPONDENZE

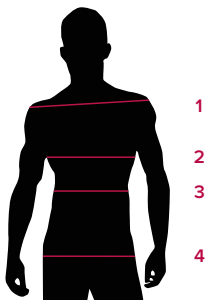
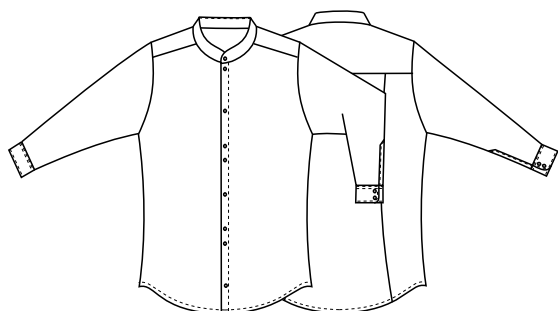


TABELLA ST-G1 SLIM FIT	XS	S	M	L	XL	XXL	XXXL	4XL	5XL
1 - SPALLE	44	45	46	47	49	51	53	55	57
2 - TORACE circonferenza	92-96	96-100	101-104	105-111	112-116	117-124	125-132	133-142	143-152
3 - VITA circonferenza	80-84	84-88	89-92	93-99	100-106	107-116	117-126	127-138	139-148
4 - BACINO circonferenza	93-97	97-101	102-105	106-111	112-117	118-125	126-133	134-143	144-153

GUIDA ALLE TAGLIE **1)** Prendere le misure anatomiche (corpo con abbigliamento intimo) senza stringere mantenendo ben teso il metro. Nota: nel caso vogliate indossare dei camici già con dell'abbigliamento sotto prendete le misure già abbigliati. **2)** Nel caso tra le misure prese vi fosse una misura a cavallo fra 2 taglie vi consigliamo di prendere quella più grande. **3)** Le misure della tabella sono espresse in centimetri.

79,5 cm



DETAILS

- Mandarin collar
- Adjustable cuff
- Unisex

SIZES

XS ÷ XXXL
Slim Fit

COLOURS

000 Black

FABRIC

100% polyester
90 g / m²



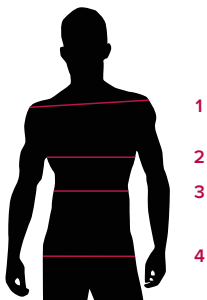
The measures indicated refer to sizes **S** for women, **L** for men. For one-size-fits-all garments, the measurements indicated are effective.

AVAILABLE COLOURS



000 Black

SIZE TABLES
AND CORRESPONDENCES



1
2
3
4

TABLE ST-G1 SLIM FIT									
SIZE	XS	S	M	L	XL	XXL	XXXL	4XL	5XL
1 - SHOULDERS	44	45	46	47	49	51	53	55	57
2 - CHEST circumference	92-96	96-100	101-104	105-111	112-116	117-124	125-132	133-142	143-152
3 - WAIST circumference	80-84	84-88	89-92	93-99	100-106	107-116	117-126	127-138	139-148
4 - HIPS circumference	93-97	97-101	102-105	106-111	112-117	118-125	126-133	134-143	144-153

SIZE GUIDE **1)** Take the anatomical measurements (body with underwear) without tightening, keeping the measuring tape taut. Note: in case you want to wear of the gowns already with the clothing underneath take the measurements already dressed. **2)** If there is a measure between 2 sizes between the measurements taken, we advise you to take the bigger one. **3)** The measurements in the table are expressed in centimeters.