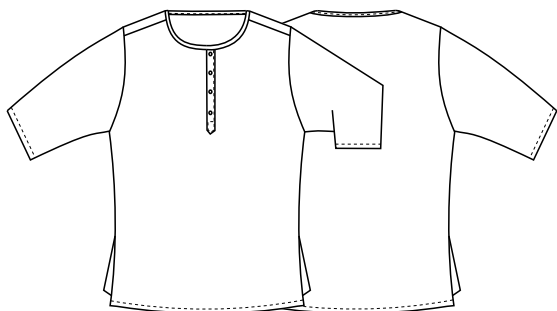


74,5 cm



DETTAGLI

- Unisex
- Ampia manica
- 2 spacchi laterali

COLORE

000 Nero

TESSUTO

100% poliestere
90 g / m²



Le misure indicate si riferiscono alle taglie **S** per i capi femminili, **L** per i capi maschili. Per i capi a taglia unica le misure indicate sono effettive.

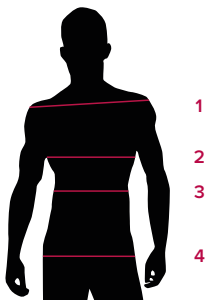
La serafino ultra light 90 g / m² è un capo molto attuale, con abbottonatura profonda e 4 bottoncini in tinta, che ne sottolineano lo stile giovane e trendy.

COLORI DISPONIBILI



000 Nero

TABELLE TAGLIE
E CORRISPONDENZE



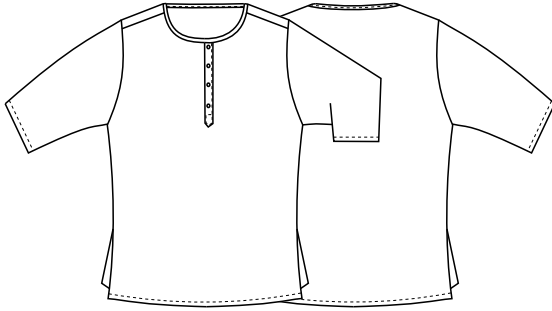
1
2
3
4

TABELLA ST-MED K2 SLIM FIT

TAGLIA	XS	S	M	L	XL	XXL	XXXL	4XL
1 - SPALLE								
2 - CIRCONFERENZA TORACE	97-100	101-104	105-108	109-112	113-118	119-126	127-130	131-142
3 - CIRCONFERENZA VITA								
4 - CIRCONFERENZA BACINO	97-100	101-104	105-108	109-112	113-118	119-126	127-130	131-142

GUIDA ALLE TAGLIE **1)** Prendere le misure anatomiche (corpo con abbigliamento intimo) senza stringere mantenendo ben teso il metro. **Nota:** nel caso vogliate indossare dei camici già con dell'abbigliamento sotto prendete le misure già abbigliati. **2)** Nel caso tra le misure prese vi fosse una misura a cavallo fra 2 taglie vi consigliamo di prendere quella più grande. **3)** Le misure della tabella sono espresse in centimetri.

74,5 cm



DETAILS

- Unisex
- Wide sleeve
- 2 side vents

SIZES

XS ÷ XXXL
Slim Fit

COLOURS

000 Black

FABRIC

100% polyester
90 g / m²



The measures indicated refer to sizes **S** for women, **L** for men. For one-size-fits-all garments, the measurements indicated are effective.

The ultra-light Serafino is a very modern garment, with deep buttoning and 4 matching buttons that emphasise its young and trendy style.

AVAILABLE COLOURS



000 Black

SIZE TABLES
AND CORRESPONDENCES

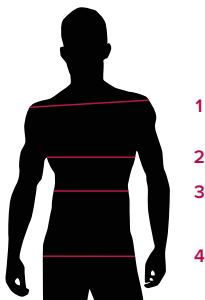


TABLE ST-MED K2 SLIM FIT		XS	S	M	L	XL	XXL	XXXL	4XL
SIZE									
1 - SHOULDERS									
2 - CHEST CIRCUMFERENCE		97-100	101-104	105-108	109-112	113-118	119-126	127-130	131-142
3 - WAIST CIRCUMFERENCE									
4 - HIPS CIRCUMFERENCE		97-100	101-104	105-108	109-112	113-118	119-126	127-130	131-142

SIZE GUIDE **1)** Take the anatomical measurements (body with underwear) without tightening, keeping the measuring tape taut. Note: in case you want to wear of the gowns already with the clothing underneath take the measurements already dressed. **2)** If there is a measure between 2 sizes between the measurements taken, we advise you to take the bigger one. **3)** The measurements in the table are expressed in centimeters.