

DETTAGLI

- Foderato
- 2 tasche
- 4 bottoni 4 fori
- Fascette regolabili

TAGLIE

XS ÷ XXL
Slim Fit

COLORE

000 Nero

TESSUTO

100% poliestere
160 g / m²



Le misure indicate si riferiscono alle taglie **S** per i capi femminili, **L** per i capi maschili. Per i capi a taglia unica le misure indicate sono effettive.

COLORI DISPONIBILI



000 Nero

TABELLE TAGLIE
E CORRISPONDENZE

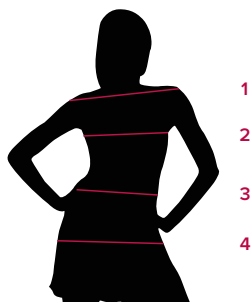
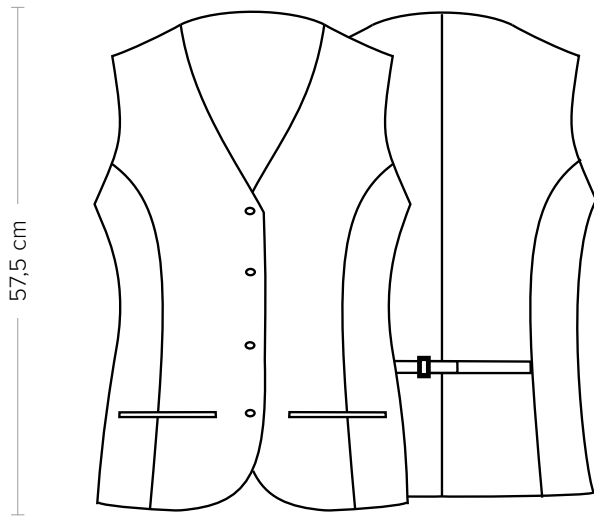


TABELLA ST-E1	SLIM FIT						
TAGLIA	XS	S	M	L	XL	XXL	3XL
1 - SPALLE							
2 - CIRCONFERENZA TORACE	85-89	89-93	93-99	99-105	105-113	113-121	121-129
3 - CIRCONFERENZA VITA	73-77	77-81	81-87	87-93	93-101	101-109	109-117
4 - CIRCONFERENZA BACINO	87-92	92-96	96-102	102-108	108-117	117-124	124-132

GUIDA ALLE TAGLIE **1)** Prendere le misure anatomiche (corpo con abbigliamento intimo) senza stringere mantenendo ben teso il metro. **Nota:** nel caso vogliate indossare dei camici già con dell'abbigliamento sotto prendete le misure già abbigliati. **2)** Nel caso tra le misure prese vi fosse una misura a cavallo fra 2 taglie vi consigliamo di prendere quella più grande. **3)** Le misure della tabella sono espresse in centimetri.



DETAILS

- Lined
- 2 pockets
- 4 buttons with four-holes buttons
- Adjustable buckle

SIZES

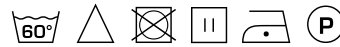
XS ÷ XXL
Slim Fit

COLOURS

000 Black

FABRIC

100% polyester
160 g / m²



The measures indicated refer to sizes **S** for women, **L** for men. For one-size-fits-all garments, the measurements indicated are effective.

AVAILABLE COLOURS



000 Black

SIZE TABLES
AND CORRESPONDENCES

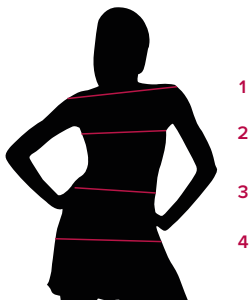


TABLE ST-E1 SLIM FIT							
SIZE	XS	S	M	L	XL	XXL	3XL
1 - SHOULDERS							
2 - CHEST CIRCUMFERENCE	85-89	89-93	93-99	99-105	105-113	113-121	121-129
3 - WAIST CIRCUMFERENCE	73-77	77-81	81-87	87-93	93-101	101-109	109-117
4 - HIPS CIRCUMFERENCE	87-92	92-96	96-102	102-108	108-117	117-124	124-132

SIZE GUIDE 1) Take the anatomical measurements (body with underwear) without tightening, keeping the measuring tape taut. Note: in case you want to wear of the gowns already with the clothing underneath take the measurements already dressed. **2)** If there is a measure between 2 sizes between the measurements taken, we advise you to take the bigger one. **3)** The measurements in the table are expressed in centimeters.