

#### DETTAGLI

- Sfoderato
- 2 tasche
- 4 bottoni 4 fori
- Fascette regolabili

#### COLORE

000 Nero

#### TESSUTO

100% poliestere  
160 g / m<sup>2</sup>

#### TAGLIE

XS ÷ 3XL  
Regular Fit



Le misure indicate si riferiscono alle taglie **S** per i capi femminili, **L** per i capi maschili. Per i capi a taglia unica le misure indicate sono effettive.

#### COLORI DISPONIBILI



000 Nero

TABELLE TAGLIE  
E CORRISPONDENZE

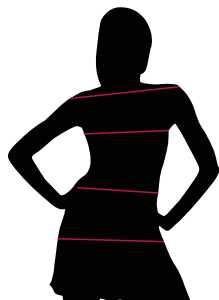
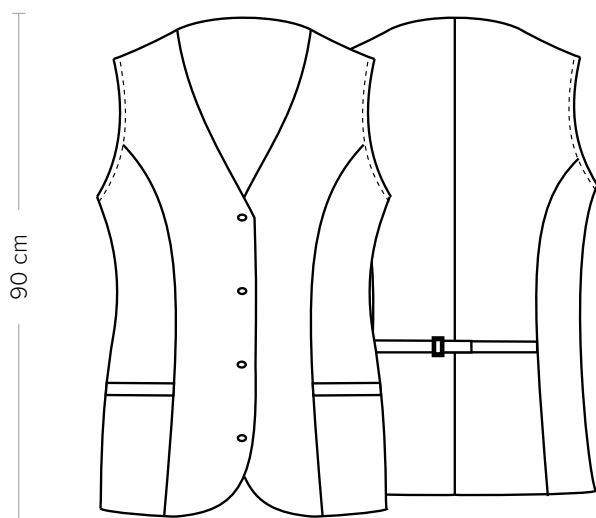


TABELLA ST-E2	REGULAR FIT								
TAGLIA	XS	S	M	L	XL	XXL	3XL	4XL	5XL
1 - SPALLE									
2 - TORACE circonferenza	83-87	87-91	91-95	95-101	101-106	106-114	114-122	122-133	133-144
3 - VITA circonferenza	75-79	79-83	83-87	87-94	94-101	101-110	110-119	119-129	129-140
4 - BACINO circonferenza	92-96	96-100	100-104	104-110	110-116	116-124	124-132	132-142	142-152

**GUIDA ALLE TAGLIE** **1)** Prendere le misure anatomiche (corpo con abbigliamento intimo) senza stringere mantenendo ben teso il metro. **Nota:** nel caso vogliate indossare dei camici già con dell'abbigliamento sotto prendete le misure già abbigliati. **2)** Nel caso tra le misure prese vi fosse una misura a cavallo fra 2 taglie vi consigliamo di prendere quella più grande. **3)** Le misure della tabella sono espresse in centimetri.



#### DETAILS

- Unlined
- 2 pockets
- 4 buttons with four-holes
- Adjustable buckle

**SIZES**  
XS ÷ 3XL  
Regular Fit

#### COLOURS

000 Black

#### FABRIC

100% polyester  
160 g / m<sup>2</sup>



The measures indicated refer to sizes **S** for women, **L** for men. For one-size-fits-all garments, the measurements indicated are effective.

#### AVAILABLE COLOURS



000 Black

SIZE TABLES  
AND CORRESPONDENCES

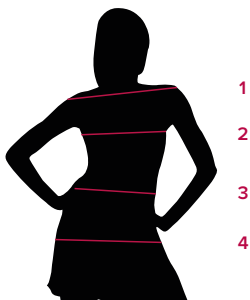


TABLE ST-E2 REGULAR FIT

SIZE	XS	S	M	L	XL	XXL	3XL	4XL	5XL
<b>1 - SHOULDERS</b>									
<b>2 - CHEST</b> circumference	83-87	87-91	91-95	95-101	101-106	106-114	114-122	122-133	133-144
<b>3 - WAIST</b> circumference	75-79	79-83	83-87	87-94	94-101	101-110	110-119	119-129	129-140
<b>4 - HIPS</b> circumference	92-96	96-100	100-104	104-110	110-116	116-124	124-132	132-142	142-152

**SIZE GUIDE** **1)** Take the anatomical measurements (body with underwear) without tightening, keeping the measuring tape taut. Note: in case you want to wear of the gowns already with the clothing underneath take the measurements already dressed. **2)** If there is a measure between 2 sizes between the measurements taken, we advise you to take the bigger one. **3)** The measurements in the table are expressed in centimeters.