

### DETTAGLI

- Coreana
- Sfoderata
- Bottoni in metallo

### COLORE

00 Bianco

### TESSUTO

100% poliestere  
220 g / m<sup>2</sup>

### TAGLIE

XS ÷ 3XL  
Slim Fit



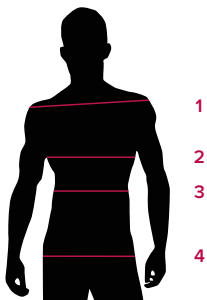
Le misure indicate si riferiscono alle taglie **S** per i capi femminili, **L** per i capi maschili. Per i capi a taglia unica le misure indicate sono effettive.

### COLORI DISPONIBILI



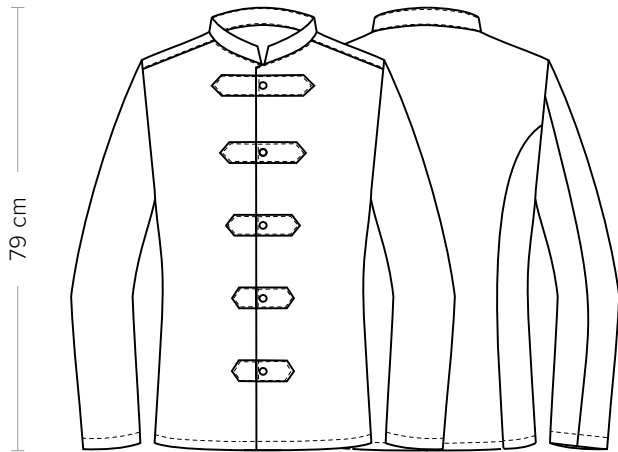
00 Bianco

TABELLE TAGLIE  
E CORRISPONDENZE



| TABELLA ST-G1 SLIM FIT          | XS    | S      | M       | L       | XL      | XXL     | 3XL     | 4XL     | 5XL     |
|---------------------------------|-------|--------|---------|---------|---------|---------|---------|---------|---------|
| <b>1 - SPALLE</b>               | 44    | 45     | 46      | 47      | 49      | 51      | 53      | 55      | 57      |
| <b>2 - TORACE</b> circonferenza | 92-96 | 96-100 | 100-104 | 104-111 | 111-116 | 116-124 | 124-132 | 132-142 | 142-152 |
| <b>3 - VITA</b> circonferenza   | 80-84 | 84-88  | 88-92   | 92-99   | 99-106  | 106-116 | 116-126 | 126-138 | 138-148 |
| <b>4 - BACINO</b> circonferenza | 92-96 | 97-101 | 101-105 | 105-111 | 111-117 | 117-125 | 125-133 | 133-143 | 143-153 |

**GUIDA ALLE TAGLIE** **1)** Prendere le misure anatomiche (corpo con abbigliamento intimo) senza stringere mantenendo ben teso il metro. **Nota:** nel caso vogliate indossare dei camici già con dell'abbigliamento sotto prendete le misure già abbigliati. **2)** Nel caso tra le misure prese vi fosse una misura a cavallo fra 2 taglie vi consigliamo di prendere quella più grande. **3)** Le misure della tabella sono espresse in centimetri.



### DETAILS

- Mandarin collar
- Unlined
- Metal buttons

### SIZES

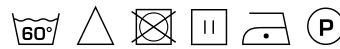
XS ÷ 3XL  
Slim Fit

### COLOURS

00 White

### FABRIC

100% polyester  
220 g / m<sup>2</sup>



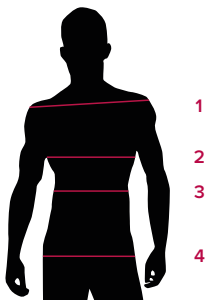
The measures indicated refer to sizes **S** for women, **L** for men. For one-size-fits-all garments, the measurements indicated are effective.

### AVAILABLE COLOURS



00 White

SIZE TABLES  
AND CORRESPONDENCES



| TABLE ST-G1 SLIM FIT           |  | XS    | S      | M       | L       | XL      | XXL     | 3XL     | 4XL     | 5XL     |
|--------------------------------|--|-------|--------|---------|---------|---------|---------|---------|---------|---------|
| <b>1 - SHOULDERS</b>           |  | 44    | 45     | 46      | 47      | 49      | 51      | 53      | 55      | 57      |
| <b>2 - CHEST</b> circumference |  | 92-96 | 96-100 | 100-104 | 104-111 | 111-116 | 116-124 | 124-132 | 132-142 | 142-152 |
| <b>3 - WAIST</b> circumference |  | 80-84 | 84-88  | 88-92   | 92-99   | 99-106  | 106-116 | 116-126 | 126-138 | 138-148 |
| <b>4 - HIPS</b> circumference  |  | 92-96 | 97-101 | 101-105 | 105-111 | 111-117 | 117-125 | 125-133 | 133-143 | 143-153 |

**SIZE GUIDE 1)** Take the anatomical measurements (body with underwear) without tightening, keeping the measuring tape taut. Note: in case you want to wear of the gowns already with the clothing underneath take the measurements already dressed. **2)** If there is a measure between 2 sizes between the measurements taken, we advise you to take the bigger one. **3)** The measurements in the table are expressed in centimeters.